



ANNUAL REPORT 2022

CENTER IN THE PARK

info@centerinthepark.org

www.centerinthepark.org

5818 Germantown Avenue

Philadelphia, PA 19144

215-848-7722



OUR MISSION

Center in the Park promotes positive aging and fosters community connections for older adults whose voices are critical instruments in shaping its activities and direction.



Rick White, Pride in the Park Member

TABLE OF CONTENTS

Mission & Vision	2
Organizational Highlights	3-4
Strategic Plan 2022-2025	4
Program Highlights	5
Revenue & Expenses	6
Staff Leadership	7
Board of Directors	8

OUR VISION

Our vision is for a community where the wisdom and experience of older adults is sought after, respected, and celebrated, where they are encouraged to define their own needs and how those needs should best be met.

ORGANIZATIONAL HIGHLIGHTS

REOPENING THE BUILDING

In July 2021, after 15 months of closure due to the COVID-19 pandemic, CIP reopened its building for on-site classes and programs. Activities were re-introduced with safety precautions and occupancy restrictions to allow for social distancing. Online classes continued, and, as the infection rates in Philadelphia fell, CIP saw increased attendance from both new and returning members.

MAPLE VILLAGE AT CENTER IN THE PARK

In September 2021, in partnership with BCM Affordable Housing and HumanGood East, CIP exercised its option to purchase Maple Village at Center in the Park, the 70-



Maple Village

unit senior housing building located at 22 W. Rittenhouse Street that CIP co-developed in 2001. The Project was granted up to \$3 million in funds from Affordable Rental Production & Preservation Housing Development administered by the City of Philadelphia's Division of Housing and Community Development (DHCD) pending an award of four percent (4%) Low Income Housing Tax Credits (LIHTC) from the Pennsylvania Housing Finance Agency (PHFA) for which our partnership has applied.



2021 Art Show: *Pottery through the Pandemic*

WINTER FESTIVAL

On December 4, 2021, CIP held its first Winter Festival, a day of shopping, sharing community resources, and strengthening CIP's relationship with the Germantown community. The Winter Festival was held outdoors, in a large tent in Vernon Park and featured holiday music, local vendors, area nonprofits, and a visit from Santa Claus.



Board members Tracey Owen-Jenkins & Janeen Crawford at Winter Festival

NONPROFIT MANAGEMENT CERTIFICATE TRAINING

With funding from the PA Department of Aging, all seven members of CIP's Staff Leadership Team were able to complete a 10-week Nonprofit Management Certificate Program through LaSalle University's Nonprofit Center.

IN-HOME SUPPORT PROGRAM SUNSET

In February 2022 Philadelphia Corporation for Aging (PCA) announced that, due to a multimillion-dollar loss in funding, they would no longer fund and administer the In-Home Support Program (IHSP). For 26 years CIP proudly administered the IHSP, assisting thousands of Northwest Philadelphia's older adults with home delivered meals, adaptive equipment, nutritional supplements, minor home repairs, and the referrals and community support they needed to remain independent. While this loss was a devastating one, CIP continues to seek new opportunities, explore new ideas and, as always, when a path appears to end, forge a new one in furtherance of our



IHSP Team Tim Wiley, Freed Anderson, Lorraine Philmore, Kiara Greene, & Leah Lewis Sturgis at CIP Juneteenth celebration

mission. We proudly continue our 54-year tradition of advocacy, support, and emergency assistance and remain steadfast in our commitment to ensuring the safety, independence, and growth of those we serve.

STRATEGIC PLAN 2022-2025



CIP Board Members Heather Morris, DeShawn Jones, Judi Mackarey

Expertly led by EBC Consulting, CIP developed and adopted a new strategic plan. The plan is a **roadmap** detailing our strategic priorities, together with the structures and processes to effectively implement meaningful, sustainable, and measurable impact in the community.

The **Strategic Plan 2022-2025** provides an overview of CIP's background, guiding principles, and an analysis of the social environment of the population we seek to serve. Together with a review of our strengths, weaknesses, opportunities, and threats, it sets the stage for a set of prioritized actions for the next three years.



Barbara Thompson, Shemia Montoute, Juanita Johnson

The Plan includes three identified **strategic priorities: financial sustainability, operational structure, and constituent engagement**. The components of each are identified together with a rationale, recommended approaches, and actions to be taken over the next three years. Our **defining role**: to be the driving force, thought leader, and partner of choice for matters relating to the successful aging of older adults in Northwest Philadelphia.

PROGRAM HIGHLIGHTS

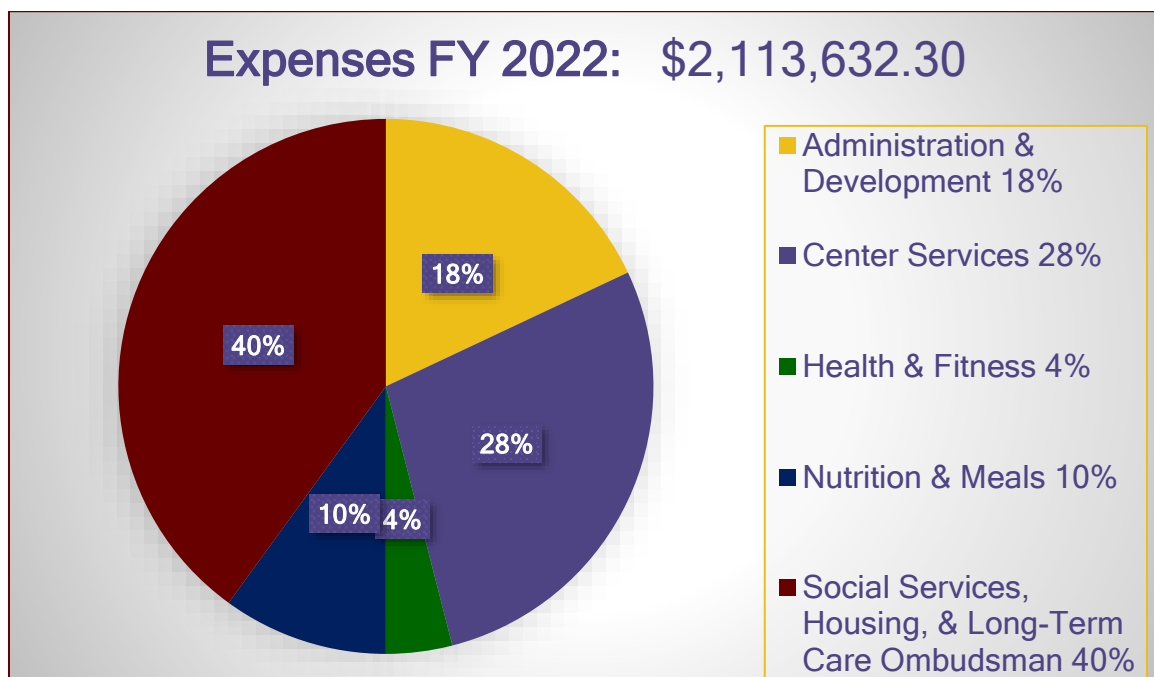
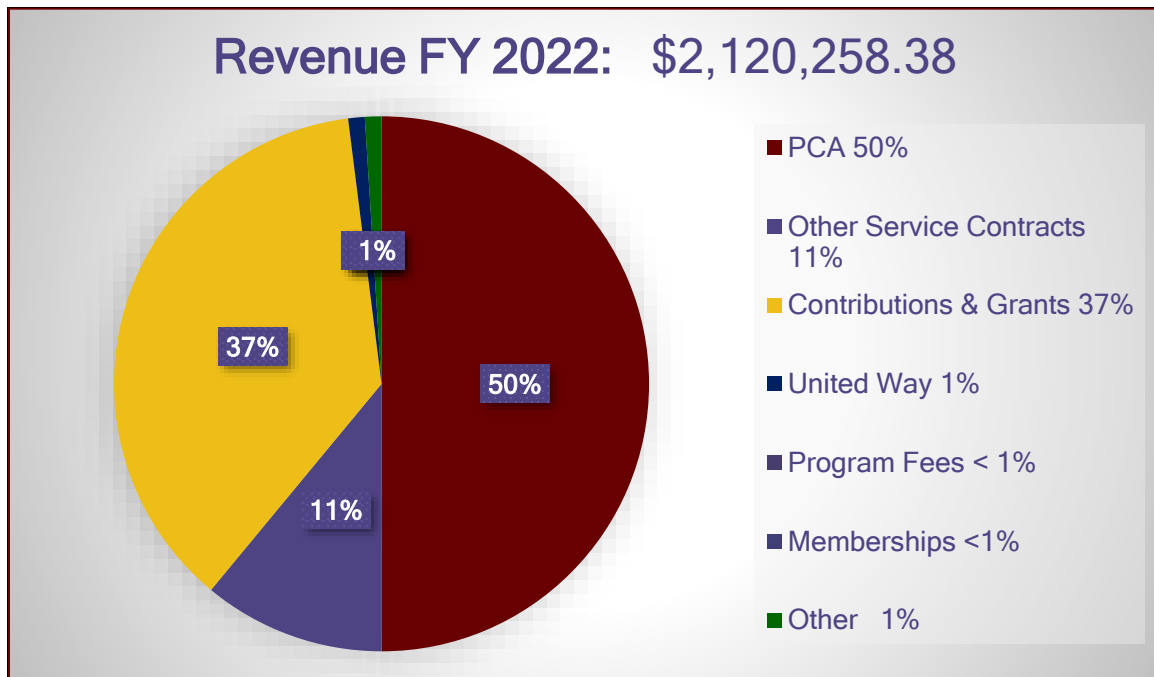
July 1, 2021 – June 30, 2022

Unduplicated Number of People Served:	1,353
New Members Joined:	143
Total Volunteer Hours Contributed:	1,092
Attended Health Promotion Activities:	289
Education/Life-Long Learning Classes:	120
Number of Meals Served:	23,456
Received Individual Counseling:	544
Received Information and Referrals:	1,324
Received Services through the In-Home Support Program:	868
Received Service through CIP Neighborhood Energy Center:	175
Received Housing Counseling:	353
Number of site visits to long-term care facilities:	149
Received Information & Consultation from Ombudsmen:	222
Cases opened & resolved on behalf of residents by Ombudsmen:	186



Top left: Board member David Griffith and William Way Community Center staff; Right: Nicole Tomassi, Pottery Artist, Bottom Left: CIP Ombudsmen and graduates from the PEER Program at Roosevelt Rehabilitation & Healthcare Center

FINANCIAL SUMMARY



"I've done a lot for everyone else over the years; I'm in this class to work on myself... I owe it to myself."
Participant of Diabetes Self-Management Program

BOARD LEADERSHIP

OFFICERS

President: Jeremiah Laster
Philadelphia Fire Department, Fire
Paramedic Deputy Chief

Vice President: Parri L. Frazier Educator
Retired Educator

Secretary: Judith A. Mackarey, Esq.
Law Office of Judith Mackarey

Treasurer: Gary E. Simkus
Acute Division, UHS of Delaware, Inc.

David P. Griffith, MSW
LGBT Elder Initiative at William Way
Community Center

Kimberly M. Hayes
Deaconess, First Baptist Church of
Crestmont

The Reverend David J. Morris
St. Luke's Episcopal Church

Tracey Owen-Jenkins
Merk & Co, Inc

Patricia C. Smith
Weichert Realtors, McCarthy Associates

BOARD MEMBERS

Marvetta E. Coleman, MBA, MEdL
Highmark WholeCare

Janeen E. Crawford
Merk & Co, Inc

Andre C. Wilder
PCAO Director of Community Services
(retired)
CIP Advisory Council President

STAFF LEADERSHIP TEAM

Reneé C. Cunningham, MSS, Executive Director

Frederick Anderson, Director of Social Services & Housing

Erika Barber, Long-Term Care Ombudsman Supervisor

Keyerra Charles, Director of Health Promotion

Shameriah Diggs-Washington, Program Director

Sykaiya Grant, Business Administrator

Megan McCoy, PhD, Director of Grant Research &
Development

Accredited by
National Institute of
Senior Centers



CIP Board Members and Executive Director, Winter Festival



CIP Staff Holiday Party

THANK YOU TO ALL OF OUR DONORS & FUNDERS

FUNDERS \$10,000 AND GREATER

AARP	Impact 100 Philadelphia
Bread and Roses Community Fund	The McLean Contributionship
City of Philadelphia Department of Housing & Community Development	Patricia Kind Family Foundation
Combined Baker Trust	PECO Energy
The Connelly Foundation	Pennsylvania Council on the Arts
The Estate of Delores Salamone	Pennsylvania Housing Finance Agency
The Edna G. Kynett Memorial Foundation	PNC Foundation
Energy Coordinating Agency	William Penn Foundation
Foundation for Health Equity	United Way of Greater Philadelphia & Southern New Jersey

COMMUNITY PARTNERS AND SPONSORS

Acme Sav-On	National Institute of Senior Centers
Aging and Diverse Home Health Care Services	Penn Memory Center
Always Best Care	Philadelphia Corporation for Aging
Assured Partners	Philadelphia 2 nd Alarmers Association
Bebashi	Regional Housing Legal Services
CARIE	Senior Law Center
Children's Hospital of Philadelphia	Talking Tech with Wayne
Cigna Healthspring	Temple School of Public Health
Clover Health	Thomas Jefferson University East Falls Campus
Dedicated Home Care	Tyler School of Art & Architecture
Edinboro University	Oak Street Heath
Einstein Care Partners	Mazzoni Center
Fox Chase Cancer Center	Philadelphia Corporation for Aging
Friends of Vernon Park	Philly Office Realty
Health Fitness Connections LLC	Rutgers University Ernest Mario School of Pharmacy
LaSalle University School of Nursing & Health Sciences	Philadelphia Department of Health
Highmark Wholecare	UU House Outreach Program
LGBT Elder Initiative at William Way	
Lifetime Retirement Solutions	
PA MEDI	
National Council on Aging	